



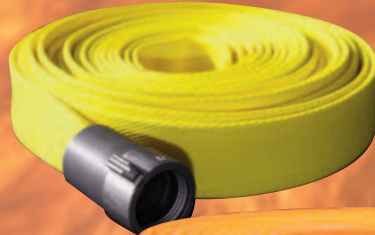
www.keyfire.com

Municipal Fabric Jacket Attack Hose

REEL-LITE



FORESTRY TYPE 2



BIG 10



FDNY SPEC



COMBAT READY

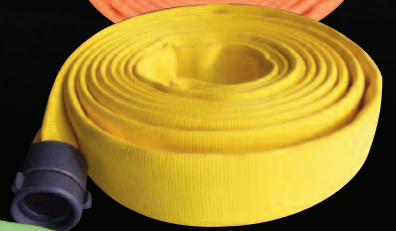


*Manufacturing Excellence
Since 1988*

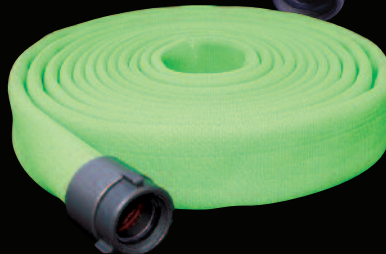
KEY-LITE



MAGNUM



MAG-LITE



KEY EASY EXIT





Visit us on the Web: www.keyfire.com

“KNOW YOUR FLOWS” FRICTION LOSS TEST

▶ Apparatus:

- (1) Fire apparatus pump.
- (1) DJ 2 1/2” x 25’ 800 PSI Fire Hose coupled 2 1/2” aluminum NH
- (2) Inline Calibrated Gauges
- (1) 2 1/2” x 1 1/2” Aluminum adapter
- (2) 1 3/4” x 50’ Fire Hose coupled Aluminum 1 1/2” NH
- (1) 15/16” Smooth Bore Nozzle

▶ Procedure:

Test is performed using a 2 1/2” Double Jacket Big 10 x 25’ long fire hose from the pump panel to the ground. A 2 1/2” x 1 1/2” adapter is added to the male end of the 2 1/2” to ensure an accurate reading at the inlet gauge without vibration. A calibrated inline gauge is then placed behind the adapter. Two lengths 50’ long test samples are coupled together and placed in a straight line laying flat on the ground. A second calibrated inline gauge is placed at the discharge end (male end) along with a 15/16” smooth bore nozzle. The total assembly is filled with water and the nozzle has an open-end discharge until a pressure of 50 PSI is reached at the discharge end. A reading is simultaneously taken on both gauges to correctly determine the friction loss of the 100’ long assembly.

▶ Results:

KEY Combat Ready 1 3/4” @ 185 GPM 10 PSI friction loss per 50’

KEY-LITE 1 3/4” @ 185 GPM = 15 PSI friction loss per 50’

KEY FDNY Spec 1 3/4” @ 185 GPM 15 PSI friction loss per 50’

KEY Magnum 800 1 3/4” @ 185 GPM = 19 PSI friction loss per 50’

KEY BIG 10 1 3/4” @ 185 GPM = 19 PSI friction loss per 50’

Test conducted by



Mailing Address: P.O. Box 16600 Plantation, FL 33318
Corporate Office: 1150 N.W. 72 Street, Miami, FL 33150

Tel: (305) 696-1680 • (800) 447-5666 • Fax: (305) 696-1316 • (800) 447-5664